

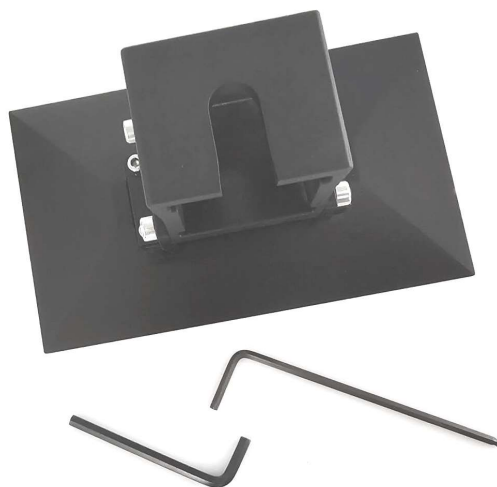
BC Zed Accuracy

This kit will fix the inaccurate platform leveling issue with the LCD screen that you may experience on your printer.



The working system is easy and effective, based on compression washers that will compensate for the inaccurate planarity you may easily observe when setting the Z zero with paper on your printer.

Instructions:



Parts included with the printer

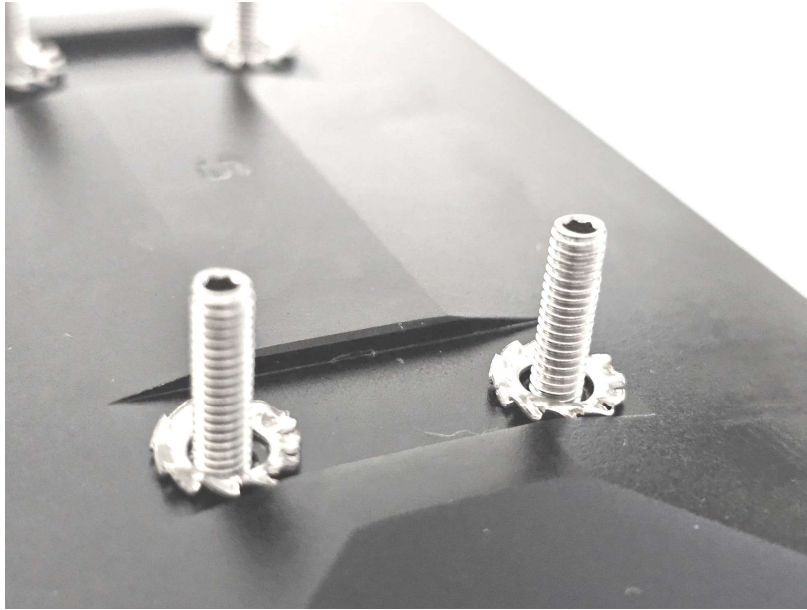
Disassemble your platform completely (pic 1).



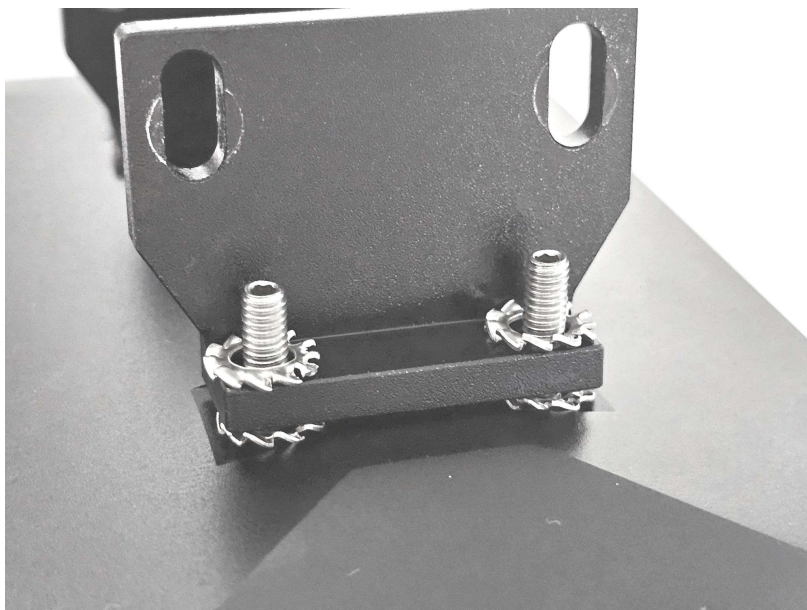
Place the headless screws and tighten them using an Allen Key (pic 2).



Install four compression washers (pic 3).



Put the shoulders in place, add another four compression washers and four hex nuts, and hand-tighten them (pic 4).



Assemble the Z holder, adding four planar washers (pic 5).



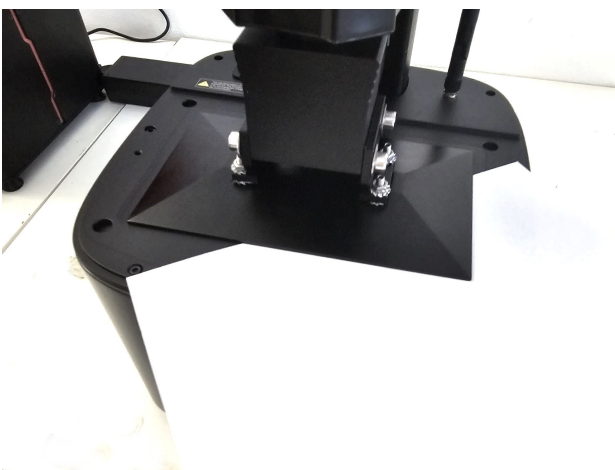
Use the supplied hex wrench at a 90° angle to tighten a little the four hex nuts (pic 6).



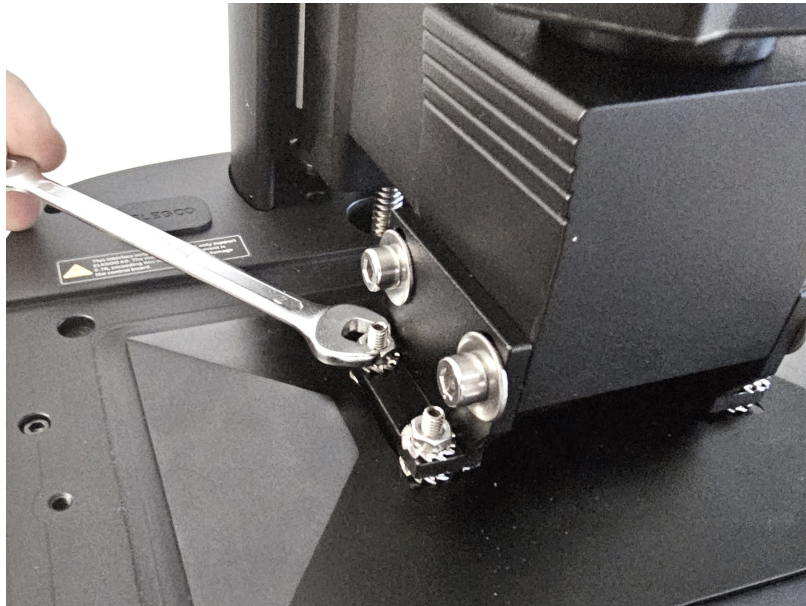
Perform a regular Z zero using paper as usual and tighten the side screws (pic 7).



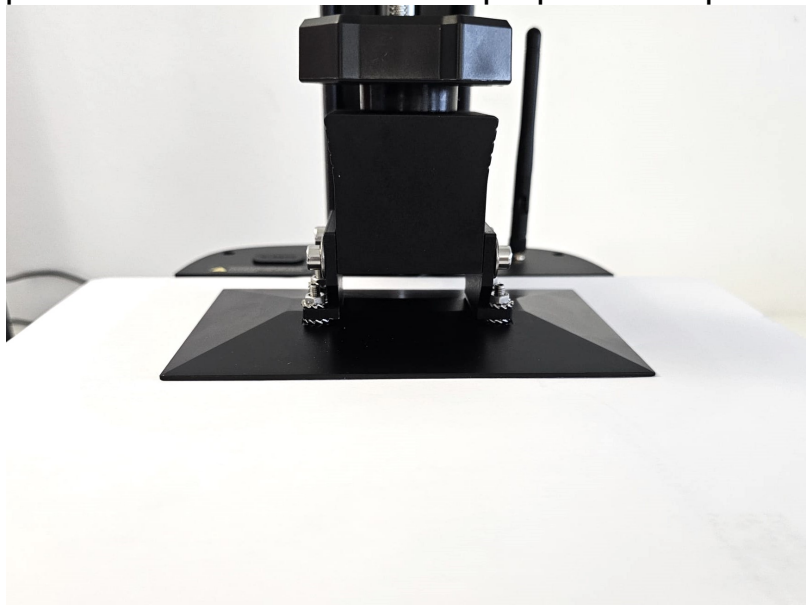
Move the paper under the platform to locate where the platform is pressing too much, and tighten the hex nut in the corresponding corner, no more than 45° each time. Check again with the paper (pic 8).



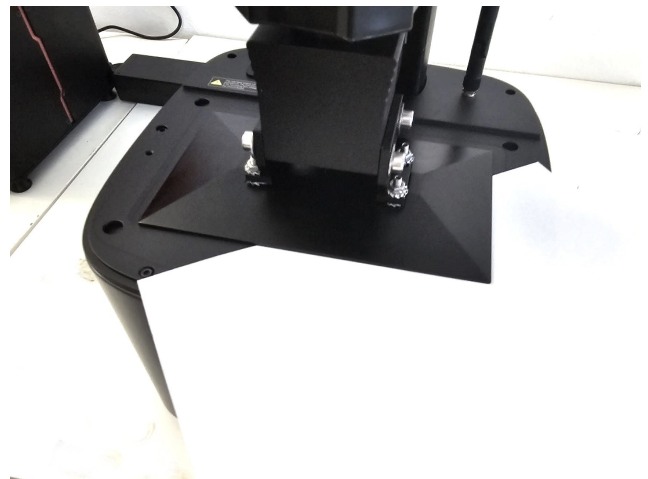
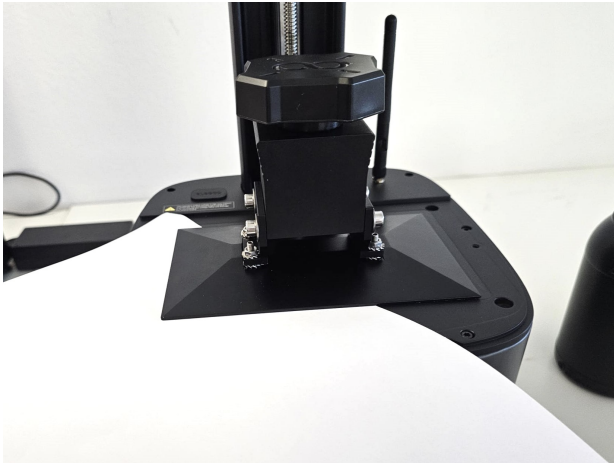
Repeat step 8 until the paper can move freely under each corner but still touches slightly.



Repeat the Z zero process, but this time, do not loosen the screws and remove the paper to return the Z-axis to its proper home position.



Check all corners again with the paper, and if fine-tuning is needed, adjust the hex nuts slightly.



All hardware is made of AISI 304 and will not rust or react with BC resins.